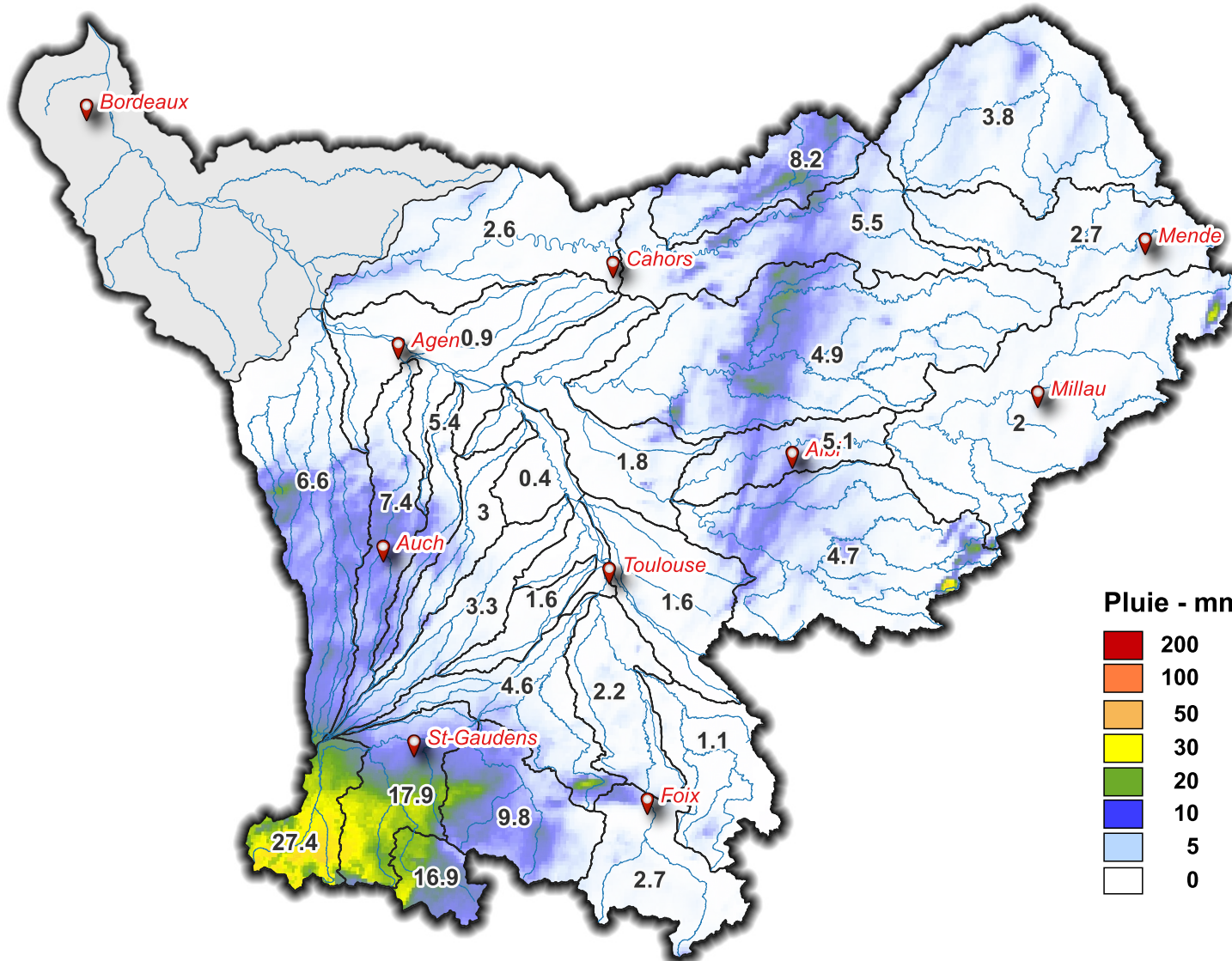
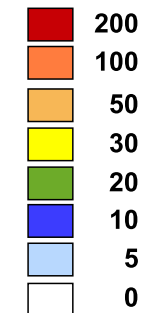


Lame d'eau du 03/09/2024 à 08 h au 04/09/2024 à 08 h



Pluie - mm



| SOUS - BASSINS | Lame d'eau moyenne (mm/j) |
|---------------------|---------------------------|
| Touch | 1.6 |
| Save | 3.3 |
| Hers Mort | 1.6 |
| Hers Vif | 1.1 |
| Ariège Lèze | 2.2 |
| Ariège amont | 2.7 |
| Louge Arize | 4.6 |
| Salat | 9.8 |
| Garonne amont | 17.9 |
| Val d'Aran | 16.9 |
| Neste | 27.4 |
| Garonne toulousaine | 0.4 |
| Arrats | 5.4 |
| Gimone | 3 |
| Baïse | 6.6 |
| Gers | 7.4 |
| Garonne agenaise | 0.9 |
| Aveyron | 4.9 |
| Tarn aval | 1.8 |
| Agout | 4.7 |
| Tarn moyen | 5.1 |
| Tarn amont | 2 |
| Lot aval | 2.6 |
| Lot amont | 2.7 |
| Lot médian | 5.5 |
| Célé | 8.2 |
| Truyere | 3.8 |
| Garonne aval | |

| | |
|--|--------------|
| Volume total précipité (hm³) | 239.8 |
|--|--------------|